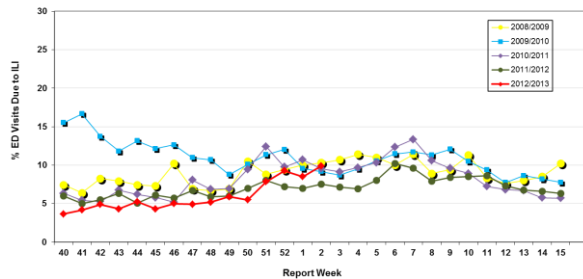


# Influenza Season 2012/2013 – Riverside County, California

## Influenza Surveillance Weekly Update

### Week ending January 12, 2013

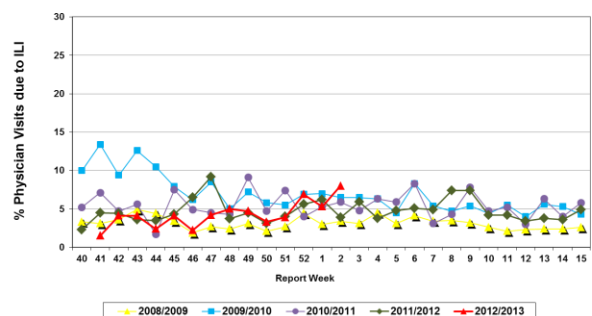
Percent of Emergency Department (ED) Visits due to Influenza-Like Illness (ILI),  
Riverside County: 2012/2013 Influenza Season



During week 2, 9.9% of visits to Riverside County emergency departments were related to influenza-like illnesses. Compared to historical data, this is within normal limits. Activity has increased over the past several weeks to just within the upper expected limit.

During week 8, 8% of visits to physician sentinel sites were related to influenza-like illnesses. Compared to historical data, this is above normal limits.

Percent of Total Visits at Physician Sentinel Sites due to Influenza-like Illness (ILI),  
Riverside County: 2012/2013 Influenza Season



**Deaths due to Pneumonia and Influenza:** During week 1\*, 7.5% of deaths were due, in part, to pneumonia or influenza. Compared to historical data, this is within normal limits. \* Data not yet available.

**School Absenteeism:** During week 51\*\*, 12.9% (only 50% of schools reporting) of students at sentinel school sites were absent due to illness. Compared to historical data, this is above normal limits. \* Data not available for weeks 52, 1 and 2 due to holiday closures.

**State Influenza Activity:** During week 1\*\*\*, overall influenza activity in California remained “regional”. Outpatient influenza-like illness (ILI) increased 0.5% in Week 1 (5.4%) compared to Week 52 (4.9%). The California Department of Public Health received two reports of laboratory-confirmed influenza-associated deaths in patients under 65 years of age. No novel influenza cases have been detected in California to date. \*\*\* Data reporting delayed one week.

**National Influenza Activity:** During week 1\*\*\*, influenza activity remained elevated in the United States, but may be decreasing in some areas. The proportion of outpatient visits for influenza-like illness (ILI) was 4.3%; above the national baseline of 2.2%. Nine of 10 regions reported ILI above region-specific baseline levels. Forty-seven states reported widespread geographic influenza activity; 2 states reported regional activity; the District of Columbia reported local activity; 1 state reported sporadic activity; Guam reported no influenza activity, and Puerto Rico and the U.S. Virgin Islands did not report. During week 1, 7.3% of all deaths reported through the 122 Cities Mortality Reporting System were due to P&I. This percentage was slightly above the epidemic threshold of 7.2% for week 1. Two influenza-associated pediatric deaths were reported. One was associated with an influenza A (H3) virus and one was associated with an influenza A virus for which the subtype was not determined. \*\*\* Data reporting delayed one week.

#### Additional Resources

Riverside County Influenza Information:  
State of California Influenza Information:  
United States Influenza Information:

<http://www.rivco-diseasecontrol.org/SeasonalInfluenza/>  
[http://www.cdph.ca.gov/healthinfo/discond/Pages/Influenza\(Flu\).aspx](http://www.cdph.ca.gov/healthinfo/discond/Pages/Influenza(Flu).aspx)  
<http://www.cdc.gov/ncidod/diseases/flu/weekly.htm>

Epidemiology and Program Evaluation  
County of Riverside Department of Public Health  
<http://www.rivcohealthdata.org>  
(951) 358-5557

